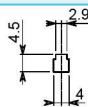


- **SENSORI PER CONTROLLO POSIZIONE CON LETTURA DEL MAGNETE INTEGRATO NEL PRODOTTO.**
- **Integrated magnet control position with switches.**
- **Integrierter Magnet für Positionkontrolle mit Sensoren.**
- **Contrôle de la position avec détecteurs avec magnét intégrée.**

• I seguenti modelli di sensori sono di tipo normalmente aperto. Il grado di protezione a norme IEC è IP67. Essi sono disponibili in versione "REED" oppure "effetto HALL". • The following switches are normally open. The protection degree is IP67 norme IEC. They are available in version "REED" oder "HALL effect". • Die folgende Sensoren sind normalerweise geöffnet. Der Schutzgrad ist IP67 Norm IEC. Sie sind möglich in "REED" oder "HALL Effekt". • Les détecteurs suivants sont normalement ouvert. Le degré de protection est IP67 aux normes IEC. Ils sont disponible en version "REED" ou "effet HALL".



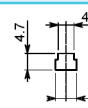
Mod.: FOH
Cod.: SE400ABC



• Tipo "REED", 2 fili, tensione = 12-24 V, corrente 5-20 mA, lungh.cavo stand. = 3 m.
• Type "REED", 2 wires, voltage = 12-24 V, current 5-20 mA, stand. length cable = 3 m.
• Typ "REED", 2 Draht, Spannung = 12-24 V, Strom 5-20 mA, stand. Länge Kabel= 3 m.
• Type "REED", 2 fils, tension = 12-24 V, courant 5-20 mA, long. câble stand. = 3 m.



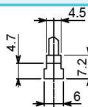
Mod.: TOH
Cod.: SE100ABA



• Tipo "REED", 2 fili, tensione = 12-24 V, corrente 5-50 mA, lungh.cavo stand. = 3 m.
• Type "REED", 2 wires, voltage = 12-24 V, current 5-50 mA, stand. length cable = 3 m.
• Typ "REED", 2 Draht, Spannung = 12-24 V, Strom 5-50 mA, stand. Länge Kabel= 3 m.
• Type "REED", 2 fils, tension = 12-24 V, courant 5-50 mA, long. câble stand. = 3 m.



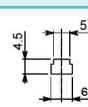
Mod.: TOV
Cod.: SE200ABB



• Tipo "REED", 2 fili, tensione = 12-24 V, corrente 5-50 mA, lungh.cavo stand. = 3 m.
• Type "REED", 2 wires, voltage = 12-24 V, current 5-50 mA, stand. length cable = 3 m.
• Typ "REED", 2 Draht, Spannung = 12-24 V, Strom 5-50 mA, stand. Länge Kabel= 3 m.
• Type "REED", 2 fils, tension = 12-24 V, courant 5-50 mA, long. câble stand. = 3 m.



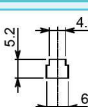
Mod.: DSL 1 C
Cod.: SR250REE



• Tipo "REED", 2 fili, tensione = 3-24 V, corrente 100 mA, lungh.cavo stand. = 2,5 m.
• Type "REED", 2 wires, voltage = 3-24 V, current 100 mA, stand. length cable = 2,5 m.
• Typ "REED", 2 Draht, Spannung = 3-24 V, Strom 100 mA, stand. Länge Kabel= 2,5 m.
• Type "REED", 2 fils, tension = 3-24 V, courant 100 mA, long. câble stand. = 2,5 m.



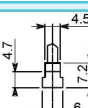
Mod.: T2H
Cod.: SE300ABC



• Tipo "HALL", 2 fili, tensione = 10-30 V, corrente 5-25 mA, lungh.cavo stand. = 3 m.
• Type "HALL", 2 wires, voltage = 10-30 V, current 5-25 mA, stand. length cable = 3 m.
• Typ "HALL", 2 Draht, Spannung = 10-30 V, Strom 5-25 mA, stand. Länge Kabel= 3 m.
• Type "HALL", 2 fils, tension = 10-30 V, courant 5-25 mA, long. câble stand. = 3 m.



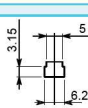
Mod.: T2V
Cod.: SE400ABD



• Tipo "HALL", 2 fili, tensione = 10-30 V, corrente 5-25 mA, lungh.cavo stand. = 3 m.
• Type "HALL", 2 wires, voltage = 10-30 V, current 5-25 mA, stand. length cable = 3 m.
• Typ "HALL", 2 Draht, Spannung = 10-30 V, Strom 5-25 mA, stand. Länge Kabel= 3 m.
• Type "HALL", 2 fils, tension = 10-30 V, courant 5-25 mA, long. câble stand. = 3 m.



Mod.: BMF 307
Cod.: SC150ADA



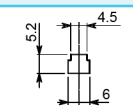
• Tipo "HALL", 3 fili, tensione = 10-30 V, corrente 200 mA, lungh.cavo stand. = 3 m.
• Type "HALL", 3 wires, voltage = 10-30 V, current 200 mA, stand. length cable = 3 m.
• Typ "HALL", 3 Draht, Spannung = 10-30 V, Strom 200 mA, stand. Länge Kabel= 3 m.
• Type "HALL", 3 fils, tension = 10-30 V, courant 200 mA, long. câble stand. = 3 m.

POSSIBILITÀ DI APPLICAZIONE DEI SENSORI MAGNETICI NEI PRODOTTI PREDISPOSTI

- **It is possible to use magnetic switches in the products with predisposition.**
- **Man kann die Magnet-schalter in die Produkten mit Anlage nutzen.**
- **On peut appliquer les détecteurs magnetiques où on a laprédisposition.**



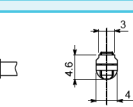
Mod.: T3PH
Cod.: SE500ABC



• Tipo "HALL", 3 fili, tensione = 10-28 V, corrente 100 mA, lungh.cavo stand. = 3 m.
• Type "HALL", 3 wires, voltage = 10-28 V, current 100 mA, stand. length cable = 3 m.
• Typ "HALL", 3 Draht, Spannung = 10-28 V, Strom 100 mA, stand. Länge Kabel= 3 m.
• Type "HALL", 3 fils, tension = 10-28 V, courant 100 mA, long. câble stand. = 3 m.



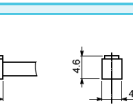
Mod.: RCE1
Cod.: SE900ABA



• Tipo "REED", 2 fili, tensione = 5-120 V, corrente 100 mA, lungh.cavo stand. = 1 m.
• Type "REED", 2 wires, voltage = 5-120 V, current 100 mA, stand. length cable = 1 m.
• Typ "REED", 2 Draht, Spannung = 5-120 V, Strom 100 mA, stand. Länge Kabel= 1 m.
• Type "REED", 2 fils, tension = 5-120 V, courant 100 mA, long. câble stand. = 1 m.



Mod.: RH
Cod.: SE800RHO



• Tipo "REED", 2 fili, tensione = 5-120 V, corrente 100 mA, lungh.cavo stand. = 2 m.
• Type "REED", 2 wires, voltage = 5-120 V, current 100 mA, stand. length cable = 2 m.
• Typ "REED", 2 Draht, Spannung = 5-120 V, Strom 100 mA, stand. Länge Kabel= 2 m.
• Type "REED", 2 fils, tension = 5-120 V, courant 100 mA, long. câble stand. = 2 m.

• ORGANI DI PRESA • GRIPPERS • GREIFER • PINCES

ART.	• SENSORE • SWITCH • SENSOR • DETECTEUR								
	FOH	TOH	TOV	DSL 1 C	T2H/T3PH	T2V	BMF 307	RCE1	RH
OPL 45-3		*	*			*			
OPE 50/S, OPE 60/S, OPE 70/S, OPE 80/S, OPE 95/S, OPE 100/S, OPE 115/S, OPE 160/S, OPE 190/S, OPE 210/S		*	*		*	*			
OPE 60-3/S, OPE 65-3/S, OPE 80-3/S, OPE 90-3/S, OPE 105-3/S, OPE 110-3/S, OPE 125-3/S, OPE 175-3/S, OPE 205-3/S		*	*		*	*			
QPG 205/S, QPG 206/S, QPG 208/S, QPG 210/S, QPG 212/S, QPG 216/S, QPG 220/S, QPG 230/S				*	*	*			
QPG 306/S	*								
QPG 307/S, QPG 309/S, QPG 311/S, QPG 313/S, QPG 317/S, QPG 322/S, QPG 330/S				*	*	*			
QPG 309/S, QPG 311/S, QPG 313/S				*	*	*			
OP 35I, OP 40I, OP 48I, OP 58I, OP 74I, OP 84I, OP 94I, OP 130I, OP 150I, OP 220I		*	*		*	*			
OG 16-A, OG 20-A, OG 25-A, OG 32-A, OG 40-A, OG 50-A, OG 63-A, OG 80-A		*	*		*	*			
OLE 12, OLE 16, OF 20, OF 25, OF 32		*	*		*	*			
FRC12, FRC16, FRC20, FRC25, FRC32							*		
VRG16-30, VRG16-60, VRG16-80, VRG20-40, VRG20-80, VRG20-100, VRG25-50, VRG25-100, VRG25-120, VRG32-70, VRG32-120, VRG32-160, VRG40-100, VRG40-160, VRG40-200								*	*

• Gli organi di presa che non sono presenti nella tabella, non sono predisposti per il controllo con il magnete. Vedere scheda successiva "sensori di prossimità". • The grippers, that are not in the schedule, have not the magnet control. See the following schedule "Proximity switches". • Die Greifer, die nicht in die Tabelle sind, haben keine Magnetkontrolle. Sehen Sie die folgende Tabelle "Kontaktlosen Sensoren". • Les pincas, qui ne sont pas en cet tableau, sont sans le contrôle avec magnét. Voir la table suivante "Détecteurs de proximité".